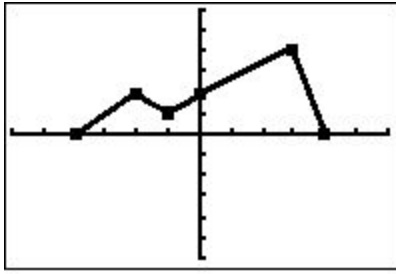


The graph given is of the function f . Carefully sketch a separate graph of each transformation. Remember the rules you have already learned.



A) $f(x)-3$

B) $f(x-3)$

C) $-f(x)$

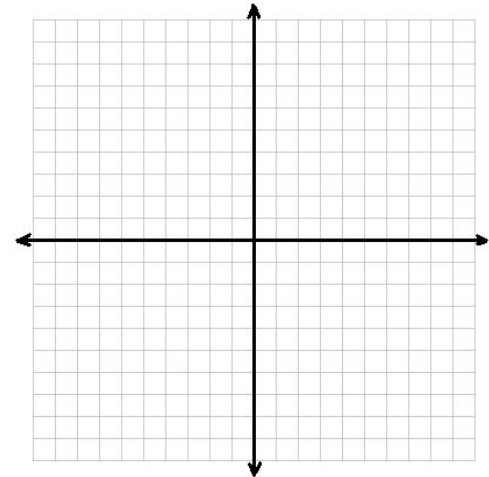
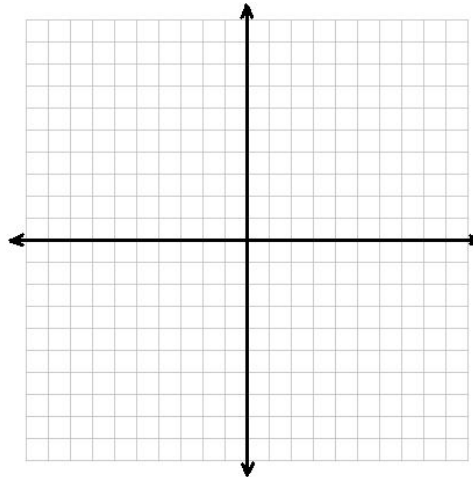
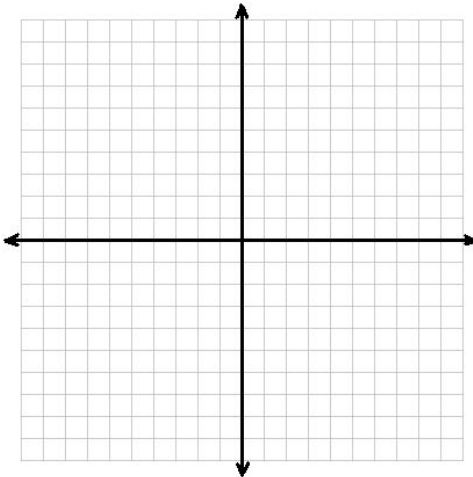
D) $2f(x)-3$

E) $f(2x)$

Transformation: _____

Transformation: _____

Transformation: _____



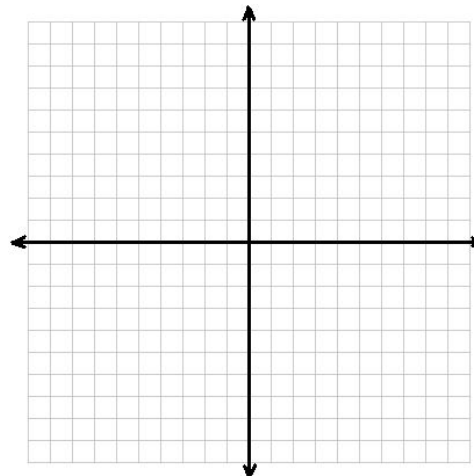
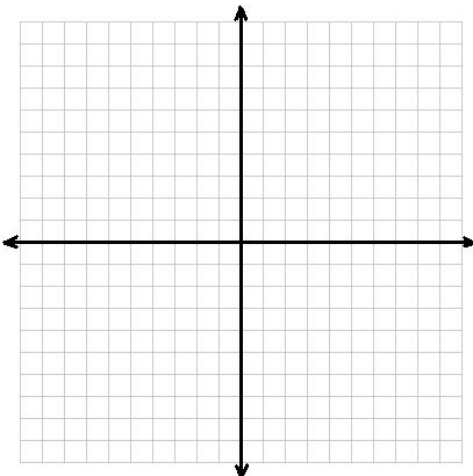
Describe the translation:

Describe the translation:

Describe the translation:

Transformation: _____

Transformation: _____



Describe the translation:

Describe the translation: