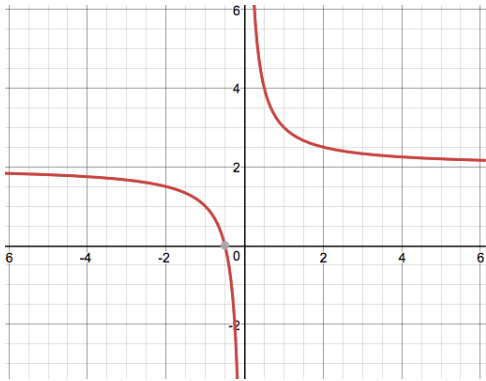


Progress Check: Shifting Functions (A4-A6)

Name: \_\_\_\_\_

1. Identify the parent function and explain how it has been shifted.

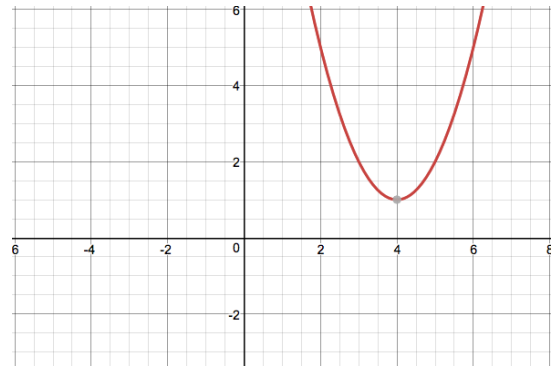
a.



Parent function:

Shifted:

b.



Parent function:

Shifted:

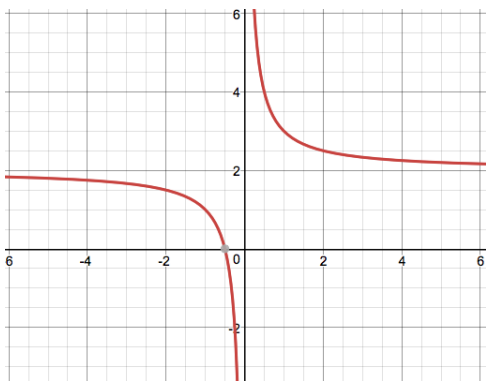
(more on the back)

Progress Check: Shifting Functions (A4-A6)

Name: \_\_\_\_\_

1. Identify the parent function and explain how it has been shifted.

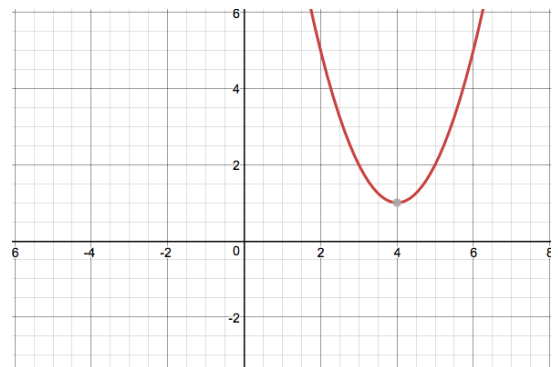
a.



Parent function:

Shifted:

b.



Parent function:

Shifted:

(more on the back)

2. Write an equation for a quadratic function that has been shifted 8 left and 5 down.

3. Write an equation for a sine function that has been shifted 2 right and 6 up.

2. Write an equation for a quadratic function that has been shifted 8 left and 5 down.

3. Write an equation for a sine function that has been shifted 2 right and 6 up.